





# **Panaco** **sarl**



**Lubumbashi**  
2845, Boulevard M'siri | C/Kampemba  
352, Av. N'djamena

**Kolwezi**  
1607, Av. Laurent Désiré Kabila  
C/Dilala | **Lualaba**

**Kinshasa**  
4<sup>ème</sup> Niveau local 404,  
Av. Du 24 Novembre dans le  
bâtiment INFINITY CENTER en  
face de ISC.

 [info@panaco-rdc.com](mailto:info@panaco-rdc.com)  
 [www.panaco-rdc.com](http://www.panaco-rdc.com)



EN  
**@Panaco sarl**  






**Panaco sarl** specializes in the supply and install of electrical and mechanical products primarily in the residential, industrial and mining sectors.

With **43 years** of experience in the greater Katanga region, Panaco complies with the local mining law (ARSP) and all other government regulations, enabling our company to provide services that are an integral part of the development of the Democratic Republic of Congo.

We pride ourselves in being an **ISO** approved entity which ensures quality and services to our client base.

## Our partners

**Schneider**  
Electric

**SULZER**

**WEG**

**energya**  
CABLES  
elsewed HELAL

**eurolux**  
Lighting your way

**FLUKE**

**CHLORIDE**  
**EXIDE**

**GEDORE**

**ABERDARE**  
CABLES

**PHILIPS**

**HIMOINSA**  
A YANMAR COMPANY

**SKF**

**HILTI**

**NEELKANTH**  
CABLES





**PANACO sarl** is proud to announce that it has recently obtained three ISO certifications (**ISO 9001 : 2015, ISO 14001 : 2015, and ISO 45001 : 2018**).

These certifications reflect our **commitment** to providing superior services while complying with the **highest** environmental and workplace safety standards.







Panaco Sarl has been the official partner of WEG in the DRC since 2019.

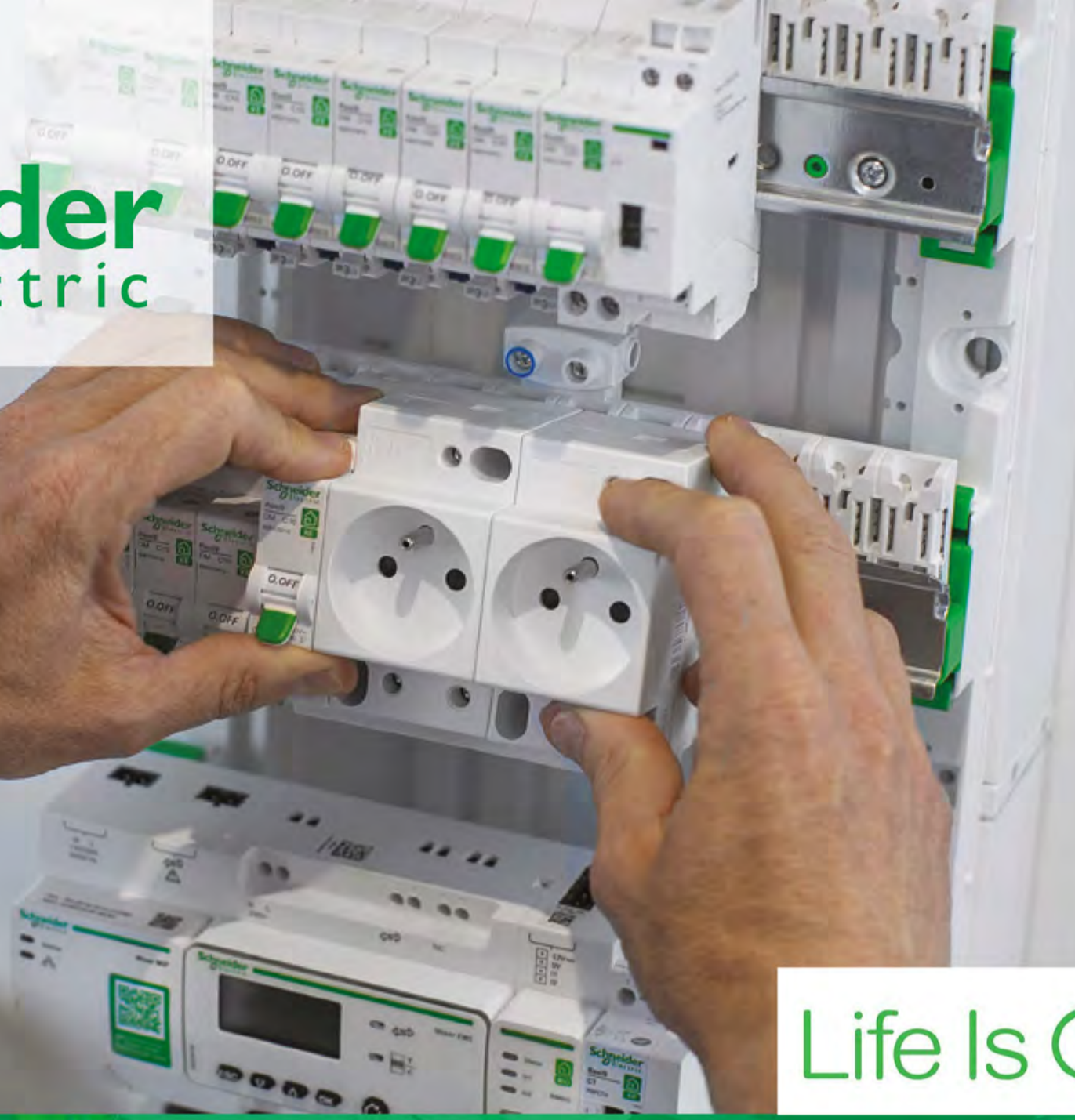
WEG is a world leader in electric motors, variable speed drives, automation systems, energy production and distribution.

Choosing WEG at PANACO is the guarantee of quality after-sales service at the best price.





# Schneider Electric



## Life Is n

Schneider Electric SE is a French industrial group with an international dimension that manufactures and offers electricity management products, automation and solutions adapted to these businesses.

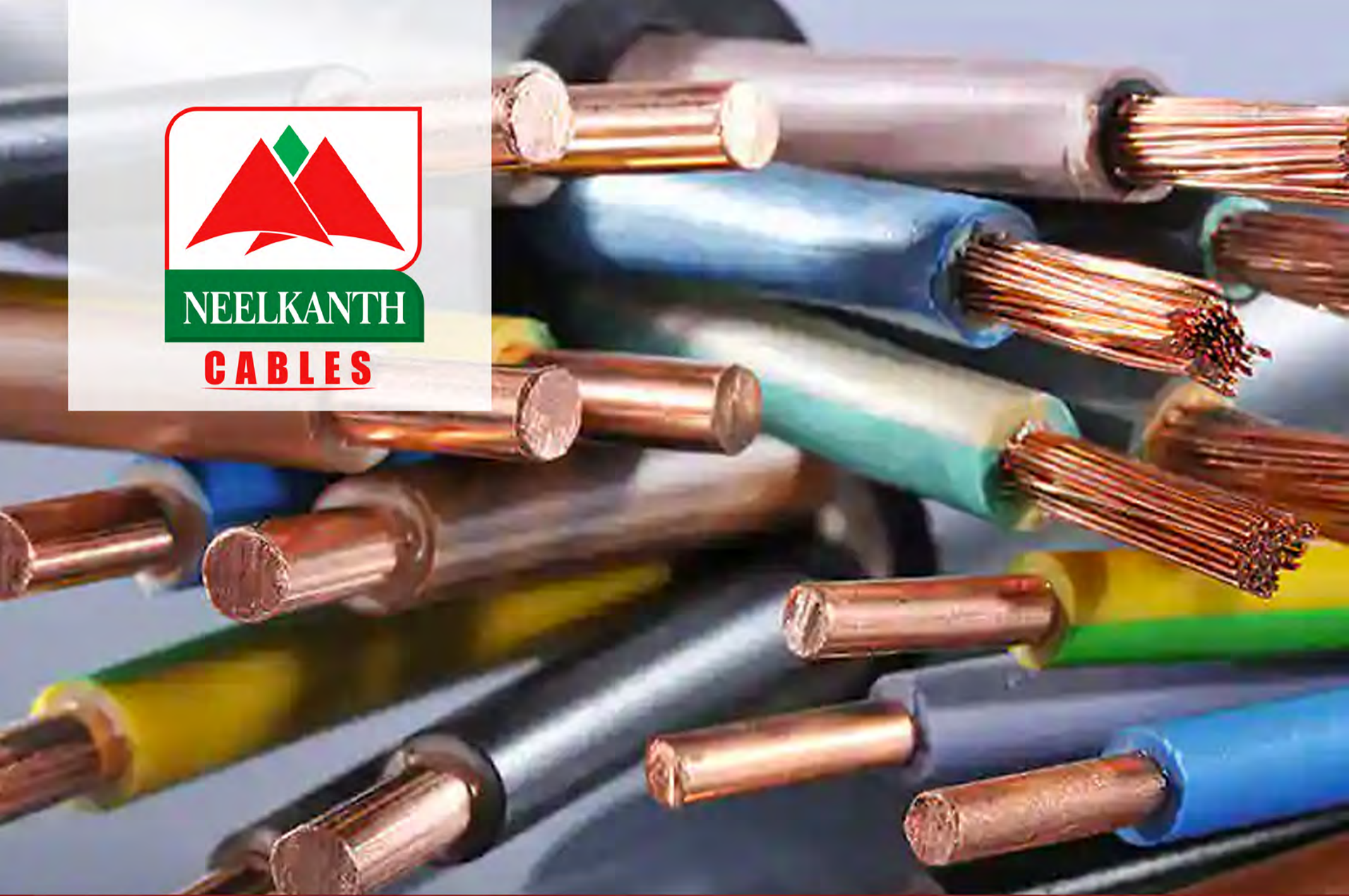


**panaco**  
sarl



05

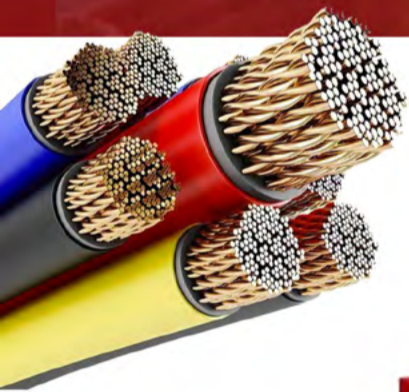




Neelkanth Cables Ltd is a state of the art cable manufacturing unit to provide a complete solution to all cable needs.

Growing demand for electricity aimed at boosting power generation, infrastructure development and industrialization has resulted in increased demand for a mode of transmission of the generated energy.

The cables are used in the domestic and industrial sectors.









# GEDORE



GEDORE quality tools "Made in Germany" since 1919. For professional applications that demand maximum certified occupational safety, durability and technical perfection.

Workshop equipment, spanners, driving tools, torque wrenches, screwdrivers, pliers, pullers, automotive and special tools, sanitary and installation tools, pipe tools, VDE-compliant tools, hammers and impact tools, workshop and work lamps, professional equipment.



**panaco**  
sarl



08





**ABERDARE**<sup>®</sup>  
CABLES

Aberdare Cables has been a South African cable manufacturer since 1941. Aberdare Cables has 3 production sites in South Africa.

In 2016, Aberdare Cables was acquired by a Chinese cable manufacturer, Hengtong. Hengtong Group operates in 120 countries, has 9 overseas manufacturing bases, and owns 5 brands including Aberdare.



**Panaco**  
sarl



09





SKF combines its field experience in more than 40 industrial sectors with its know-how in the following technological competence areas: bearings and bearing assemblies, sealing solutions, mechatronics, services and lubrication systems. Its success is based on this know-how, its employees and its commitment to the "SKF Care" principles.







**HIMOINSA**  
A YANMAR COMPANY



Generators, light towers and energy storage and distribution systems.

Equipment for short and medium-term applications, which stand out for their robustness and reliability for 24/7 operation.

Our comprehensive range of mobile power equipment is designed and manufactured to cover all rental industry requirements.



11





**FLUKE**



From installing and maintaining industrial electronics to precision measurement and quality control, Fluke tools help you stay on the cutting edge, no matter where you are in the world.

The typical clientele is made up of technicians, engineers, metrologists, manufacturers of medical devices and computer network professionals; people whose reputation rests on their tools and who use them to gain power and increase their abilities.

Fluke ranks first or second in every market in which the company is represented.

The Fluke brand enjoys a reputation for portability, ruggedness, safety, ease of use and high quality.



12

**Panaco**  
sarl





# HILTI



**panaco**  
sarl



13







- ▶ **Energyya cables** a division of Energyya Industries, was established aspiring to be one of the top regional leaders in the manufacturing & supply of electrical power cables (up to 500 KV) and the full range of the specialty cables.
- ▶ Our primary objective is to provide high quality products and full technical solutions catering to our customers specialized needs that not only satisfy our customers' requirements but also exceed their expectations.



EXTRA HIGH VOLTAGE  
CABLES UP TO 500 KV



HIGH VOLTAGE  
CABLES UP TO 150 KV



MEDIUM VOLTAGE  
CABLES UP TO 30 KV



LOW VOLTAGE  
CABLES UP TO 1 KV



CONTROL CABLES



OHTL



TELEPHONE CABLES



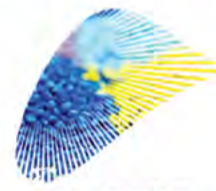
BUILDING WIRES



FIRE RESISTANT  
CABLES



METALS



PLASTICS

### Our Certificates



### Contact Us



**5 Factories**  
( 2Egypt – 3KSA )



**+50 Countries**  
Export to



**+100,000 Tons**  
Capacity



**+2000**  
Staff





## Our Achievements with

- ANVIL MINING
- METALKOL
- LUANO CITY
- KCC / KOV KOLWEZI
- BRALIMA / LUBUMBASHI
- BRASSERIE / LUBUMBASHI
- REGIDESO / LUBUMBASHI
- BOSS MINING
- COMIDE
- MMG
- GECAMINES
- KICC KINSEDA
- GOVERNMENT LUALABA

...



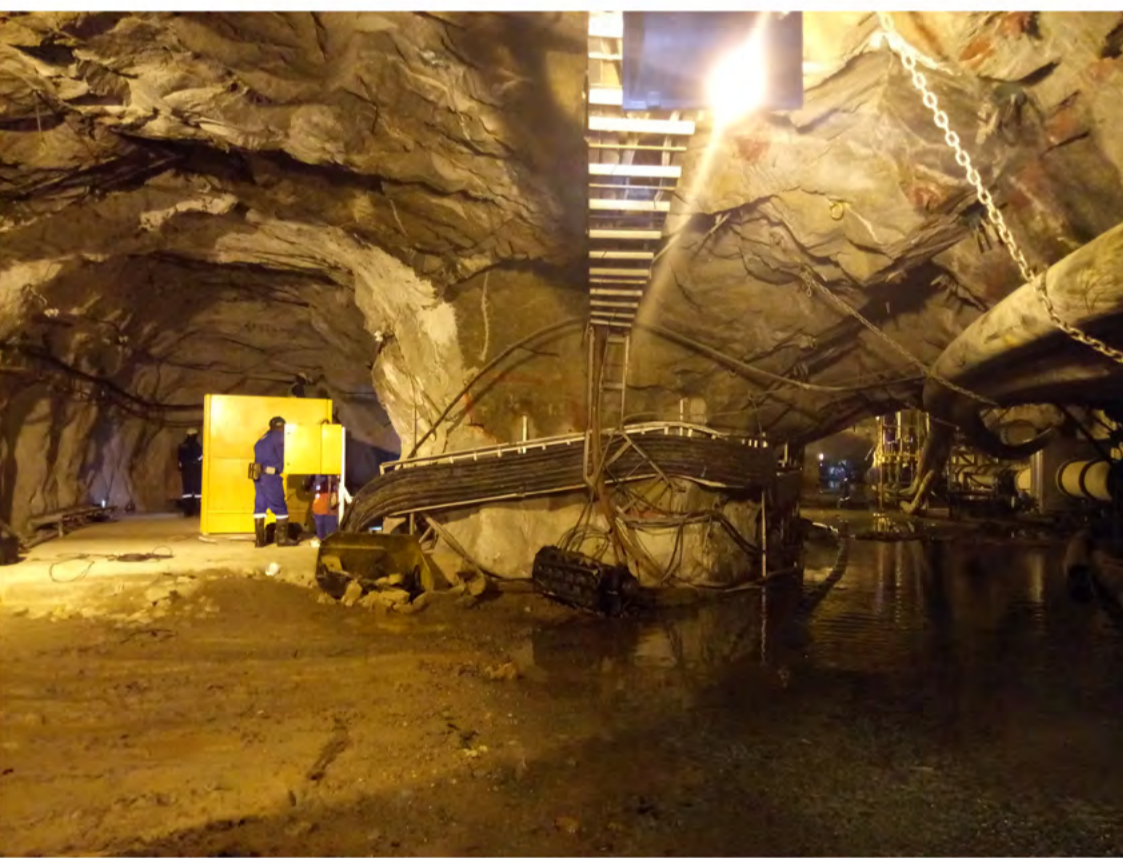




# Our projects















**Panaco**  
sarl

**Lubumbashi**  
2845, Boulevard M'siri | C/Kampemba  
352, Av. N'djamena

**Kolwezi**  
1607, Av. Laurent Désiré Kabila  
C/Dilala | **Lualaba**

**Kinshasa**  
4<sup>ème</sup> Niveau local 404,  
Av. Du 24 Novembre dans le  
bâtiment INFINITY CENTER en  
face de ISC.



 [info@panaco-rdc.com](mailto:info@panaco-rdc.com)  [www.panaco-rdc.com](http://www.panaco-rdc.com)

